



MONTHLY MEMBERSHIP PROGRESS REPORT

District 322 E

Results as of: 06/30/2019

GMT: SWADESH RANJAN SAHA

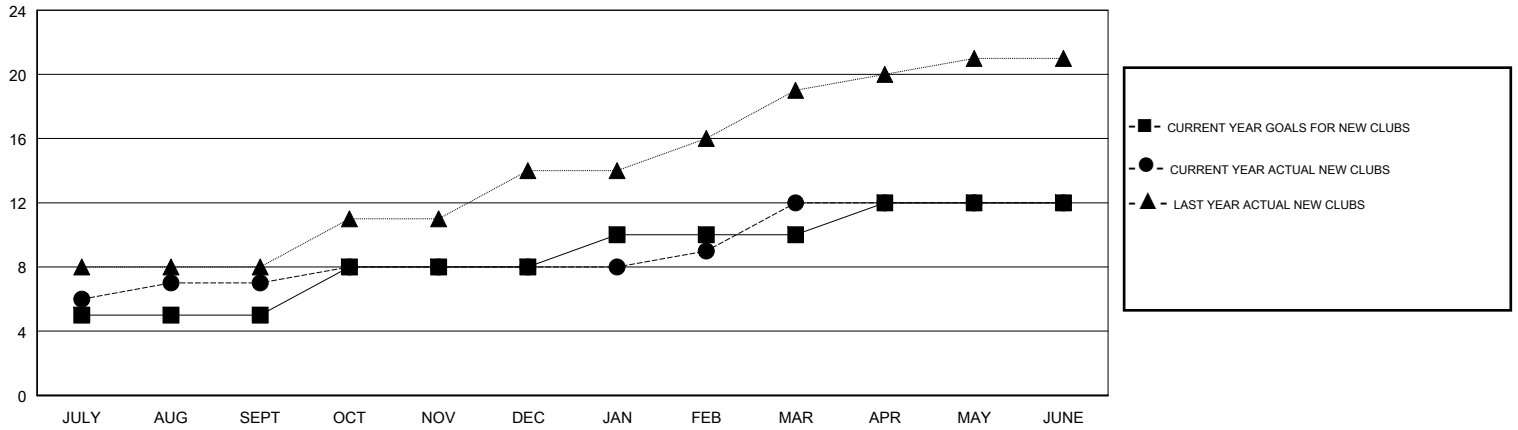
LOCATION INDIA

GMT CA

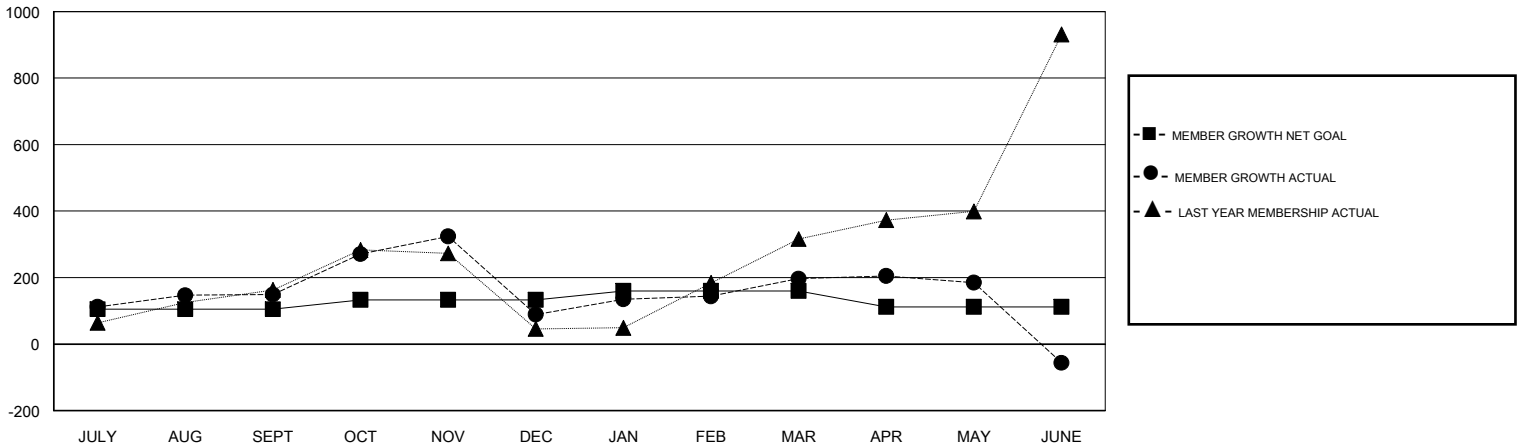
Clubs			
RESULTS FOR 2018-2019			
QUARTER	NEW CLUB GOAL	NEW CLUBS	DROPPED CLUBS
JULY/AUG/SEPT	5	7	0
OCT/NOV/DEC	3	1	6
JAN/FEB/MAR	2	4	0
APR/MAY/JUNE	2	0	4

Members			
RESULTS FOR 2018-2019			
QUARTER	MEMBER GROWTH NET GOAL	MEMBER GROWTH ACTUAL	DROPPED MEMBERS ACTUAL (including transfers)
JULY/AUG/SEPT	105	260	103
OCT/NOV/DEC	28	242	301
JAN/FEB/MAR	27	218	68
APR/MAY/JUNE	-48	203	419

GOALS AND ACTUAL NEW CLUBS CUMULATIVE



GOALS AND ACTUAL MEMBERS CUMULATIVE



DROPPED CLUBS: 10	83 CLUBS OF 136 ADDED 1 OR MORE NEW MEMBERS	<u>GENDER DISTRIBUTION</u>	
DROPPED MEMBERS		MALE	3,180 (66.36%)
DECEASED	13	FEMALE	1,612 (33.64%)
CLUB CANCELLED	273	Women Percentage Fiscal Year Goal: 37%	
OTHER	605	TOTAL FAMILY UNIT MEMBERS	2,011
TOTAL	891	FAMILY MEMBERS PAYING HALF DUES	1,096

[CLICK HERE FOR CUMULATIVE MEMBERSHIP DATA](#)